

Personalized Signature 3D Pedometer Smart watch



Instruction Manual

Version 1.0

Hello

Thank you for choosing our products!

In order to let you handle this product freely and easily as soon as possible, we randomly come with a detailed user manual. You can obtain information about the product introduction, using methods and so on. Before using this product, please read all the information we have supplied carefully, so that you could use this product better.

We are very serious and rigorous when writing this manual, hope to provide you with complete and reliable information. However, it is hard to avoid errors and omissions, thanks for your understanding and sincerely welcome your comments and corrections. If you find any problems during usage, please call our service hot line. Thanks for your support and cooperation!

Please back the data information to your computer at any time. Our company will not be responsible for the loss or damage to the personal information caused by mis operation to software or hardware, product repair, or other unexpected. And we will be also not in charge of the other indirect loss caused by our products. While we have no control over the misunderstanding to the manual of the user, so our company will not be responsible for the unexpected loss during usage, and we will also not be in charge of the claims from the third party caused by our products.

If there is any change of information in this manual without prior notice.

This manual is protected by copyright, without our company's prior written permission, any part of it could not be photocopied or copied in any way. Our company reserve the right to the manual, Three Guarantees Certificate and the power for the final interpretation to the related information.

1

Notice

- ◆ Prohibit children to play with this machine alone. Please don't fall off or rub and strick with hard object, otherwise, it may cause abrasion to the machine's surface, data loss or other damage to hardware.
- ◆ Please don't heat the battery or put it into the fire. Lithium Battery Meltdown, will have a violent rupture, causing a fire.
- ◆ Please don't attempt to break down or modify this machine, this can result in electric shock or hinder the product warranty.
- ◆ Don't use chemicals or cleaning kit to clean the machine, which will damage machine surface and corrode paint.
- ◆ This product is waterproof design for daily life. Don't let it soaked in water, against wearing it when taking a shower or swimming.
- ◆ When the product is used as a portable hard drive, please store or derive files with correct file management way. Our company will be not responsible for any file lost caused by any action.
- ◆ Suggest to backup the personal information stored in this machine in time.
- ◆ Forbid this product using the overload power charging, bending forcibly or squeezing heavily the strap. It may cause fires.
- ◆ Please don't expose this machine to the humid environments or in the rain.. If the device is water or damp, it may lead to equipment failure and even be unable to repair.
- ◆ This product is designed for capacitive touch keys. Don't touch the keys with wet hands. If there are water drops on the product's appearance or on the hand, please dry it with cloths and then operate it.
- ◆ Because of performance and function of this products changes without prior notice, please understand.
- ◆ If the actual product due to firmware upgrades such as setting up and using methods inconsistent with this manual, please check with the dealer to obtain the latest product information. Thank you for your cooperation!

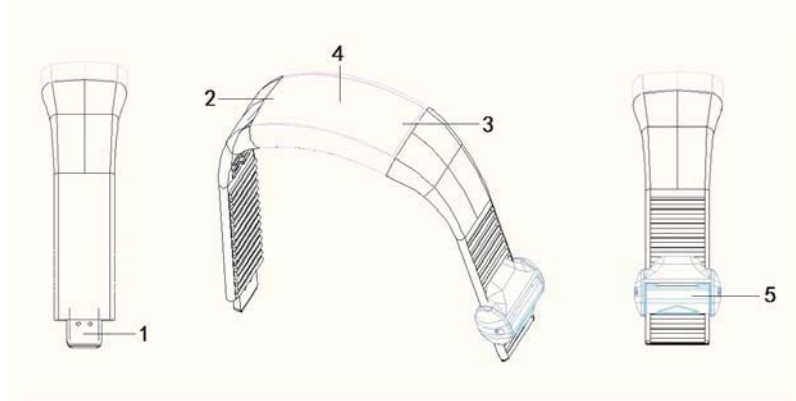
2

Product Brief Introduction

- Built-in 3D acceleration sensor with high sensitivity, can catch your each small action, Making more accurate pedometer.
- It can trace your burning calories, movement steps, movement distance, and also could set and inquire the complete of moving goal.
- With individual signature functions, you can enter what you want to show on the LED screen by computer, showing the personality and fashion.
- Strap integrated usb2.0 interface as a whole, plug and play. Built-in large capacity storage space can be used as portable hard drive.
- With the memory function of movement data, could record and view the one's movement data for more than 10 years.
- Display time/day, adjust time with the computer synchronization.
- Built-in Capacitive touch buttons, possessing more sense of fashion and technology.
- USB rechargeable watch, built-in rechargeable battery, connected to the USB port to store data and charging.
- Small and light body, Simple and Fashionable, Design of Circular arc for wrist, More comfortable to wear.

3

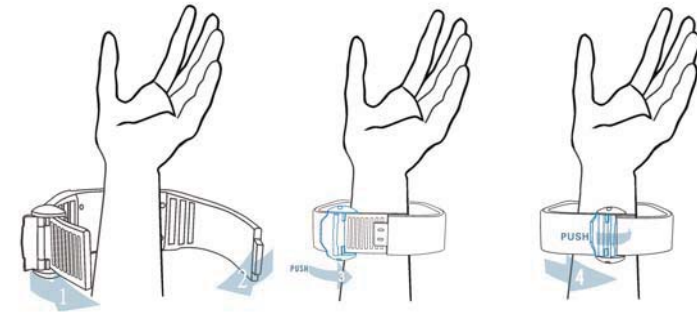
Appearance Notes



- 1.USB port 2.Touch key K0 3. Touch key K1
4.LED display screen 5.Buckle of watchband

4

Adorn correctly



Wearing step instructions:

1. Move the strap clip into the most location of the strap. According to the individual size to adjust the strap to fit the gear position.
2. Then move the clip back to press the USB interface of the strap.
3. Compress the clip of the strap. Wearing is complete.

5

Basic operations

1.Watch time/day: Touch Key K1 to display current time and day.

【Hint】 : If you have set the personal signature in the watch,it will display after the appearance of time/day.

2.Enter the pedometer: Touch K0 for 3 seconds to go to the pedometer works.

【Hint】 : ①When pedometer state,Touch K0 to switch pedometer or timing working state.

②When pedometer or timing state,Touch K1 to pause or continue the current working state.

③During the pedometer or timing sate,It could tell you the current time by touch K0 for 3 seconds.

④When pedometer or timing state,Touch K0 and K1 at the same time to exit the current working state.

3.Show Personal Signature: Touch K0 to show the personal signature you have set on the screen.

【Hint】 : ①The headline of personalized signature could be set by attached software.(For more see page 11)

6

②When displaying the personal signature,touch K0 and K1 at the same time to make the personalized signature shown circularly.

③If you have did not set personal signature,it will only display time/day.

4.Checking Disk Size and Battery: Touch K1 for 3 seconds to go to the view data state,at this time,it will appear the Disk Size ===>>Free Size===>>Battery.

5. Set time :①Touch K1 firstly, then enter into a timing state to show current and real time.

②When displaying time, touch K0 and K1 at the same time for 3 seconds.

③When showing the clock symbol on the screen, touch K0 continuously three times,and then touch K1 continuously three times.

【Hint】

①After Entering the state of setting time,touch K0 to increase the number,touch K1 to decrease the number,Touch K1 and K0 at the same time to switch the adjustment options.

②Setting time could be set by computer synchronization method.(Please refer to page 10)

7

Communication Operation

1. Connect Computers

- ① Connect the USB port of this machine to the computer's USB interface, and then the screen will display USB connection Status.
- ② If it is the first time to use this machine, Windows will show "Found new hardware".
- ③ It will show a new disk in "MY COMPUTER".



2. Break the connection to the computer.

- ① Before removing this machine from the computer, please make sure that the communication with the computer has been stopped. You must be properly uninstall the USB device, or it may cause damage to or loss of data.
- ② Double - click the computer in the lower right corner of the " unplug or eject hardware ", such as the right.
- ③ Click on "STOP" in the pop-up window.



- ④ Then click on "OK" in the pop-up window, you can move away the USB cable.

The above pictures are subject to the actual operations!

Illustration of software function

Personalized signature 3D pedometer smart watch has random bundled software for this machine, it can set time correction by software, set personal information, track your burning calories, moving steps and movement distance, and could also set and inquire the complete of your moving goal.

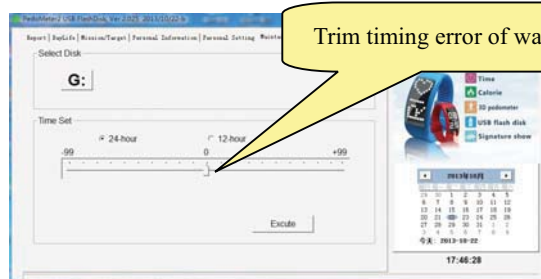
1. Set of personal basic information

After setting personal information, click reserve.



【Hint】: Please set correct personal information, so that the machine could more accurately track your burning calorie, moving steps and moving distance.

2. Time set of PC

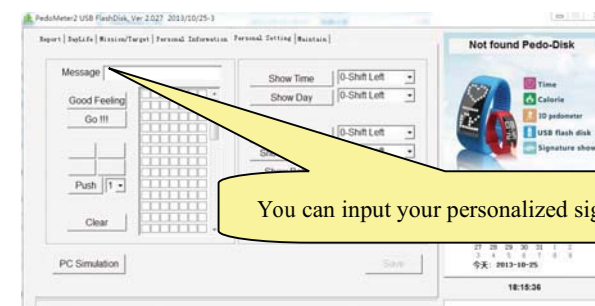


Trim timing error of watch.

【Hint】

- ① After clicking "Execution time correction", please remove the device from the computer immediately, the machine will correct time automatically.
- ② Factory-set default display time is 24h system. It can set up as 12h system.
- ③ The progress bar of Time Set Column is used for fine tune adjustment of timing error. If the time is correct, please don't adjust this item.

3. Personalized settings

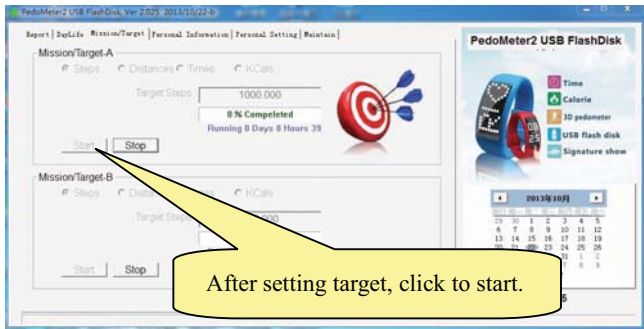


You can input your personalized signature here.

【Hint】

- ① You could input your personal signature in column "Message". The Personality could be rolling displayed on the LED screen.
- ② You can set display Time/Day/Disk Size/Battery/icon and other personalized display on this page.

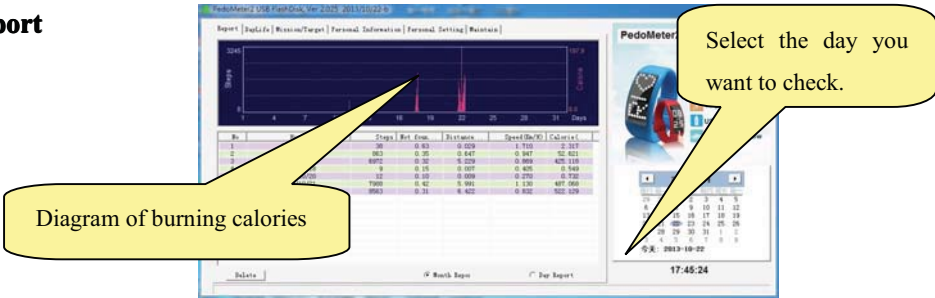
4.Mission/target



【Hint】

- ①You can set and inquire the complete of your exercise goal on this page.
- ②Please click start after setting goal. The next exercise data will be added up to your set target.

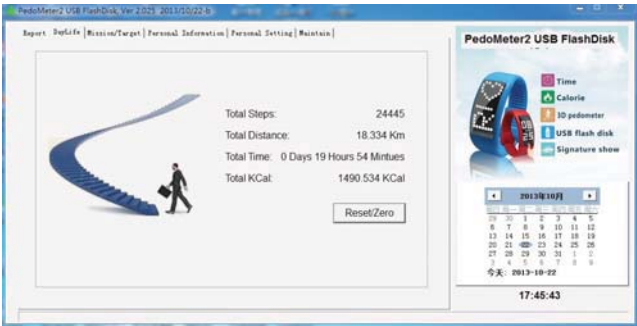
5.Report



【Hint】

- ① You can trace your burning calorie,movement steps and movement distance on this page.
- ②You can click “Month Report” or “Day Report” to check data information of the current month or current day.
- ③You could click the "calendar" in the right corner of the software interface to select the day you want to check.

6. Career



【Hint】

- ①You can trace your accumulative burning calorie, movement steps and movement distance on this page
- ②After clicking “Reset/Zero”, the accumulated data will be zeroed on this page.

Specification parameter

Boundary dimension	235mm×30mm×10mm(Specific please in kind prevail)
Weight	35g （net weight）
Dispay screen	LED Lattice Screen: 13×7
Capacity	1G/2G/4G/8G/16G/32Gelse （ Specific please in kind
Interface type	USB2.0
Step count accuracy	±5%
Time error	24H error(The software can adjust the rage ±99 secs/day)
Data memory	Memorize over ton-year exercise data
Display of steps	0 step ~ 65535steps
Battery life	Rechargeable battery, charge-discharge times>300times
Supply voltage	DC=5V
Run barometric	860 hPa ~ 1060 hPa
Operating	0 to 45 degrees centigrade

If there are any change due to improvements of specifications and appearance,without notice.